



* Boundary lines are for illustrative purposes only *



1179-1189 Mamre Road KEMPS CREEK, NSW



Mamre Road - 9.12 Acres - 134 Metre Frontage

Romic Moore Property are pleased to offer 1179-1189 Mamre Road, Kemps Creek to the market.

Located on a sprawling 9.12 acres* with a substantial Mamre Road frontage exposure of over 134 meters* , this property presents an attractive opportunity with exceptional prospects for the future.

Favorably positioned, it benefits from its proximity to the Western Sydney Airport, its considerable connectivity to major roads including the M12, M5/M7, upgraded Elizabeth Drive, and a mere five-minute drive to Erskine Park Industrial Precinct underlines the property's potential as a substantial growth asset.

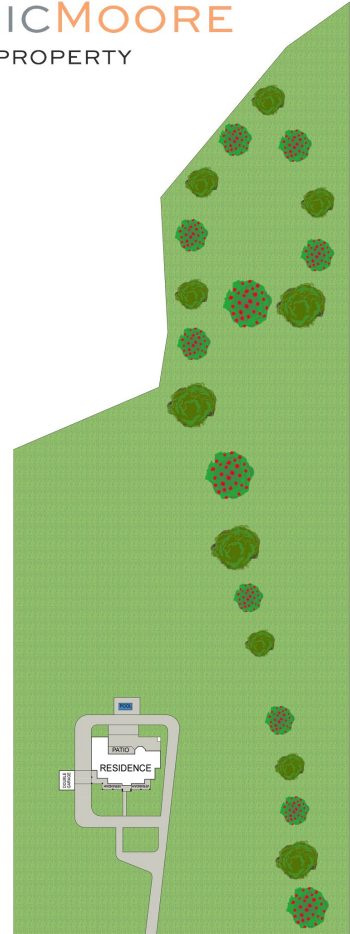
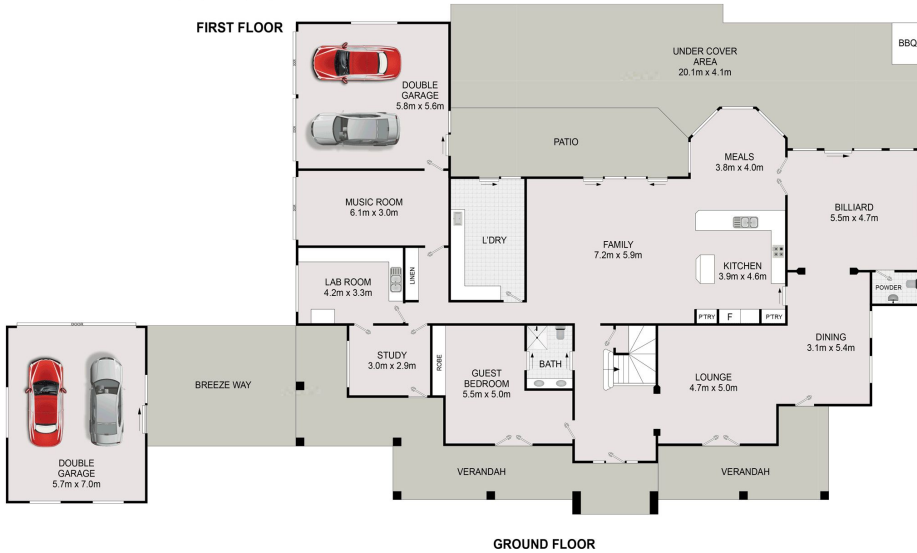
This expansive property hosts a two-storey brick residence, offering five bedrooms and three bathrooms with accommodating parking for up to four vehicles. The homes sensible layout positions four bedrooms on the upper level with a master suite, including an ensuite bathroom and a walk-in wardrobe. Conveniently located on the lower level is an additional bedroom, possessing its private ensuite bathroom enhancing its flexible use. The home encases an extensive open floor plan design hosting a kitchen, dining and family space, further complemented by an additional lounge room, formal dining area and a unique sunken billiards room. The property's versatility extends to d

Just Listed

Type : Acreage/Semi-Rural
Land : 9.12 Acres

Slavko Romic
0422683007

Anthony Moore
0412730017



DISCLAIMER: Drawings are approximate and to be used for visual representation ONLY. All enquiries must be directed to the vendor, agent or party representing this floor plan.

1179 MAMRE ROAD

KEMPS CREEK

