



7 Emmetts Farm Road ROSSMORE, NSW

4 bedrooms 3 bathrooms 3 car lock-up garage

## Exceptional Aerotropolis Opportunity On An Elevated 4.94 Acres

RomicMoore Property proudly presents an exceptional opportunity at 7 Emmetts Farm Road, Rossmore. Situated on an elevated 4.94 acres\* of flood-free land, this property features a neatly maintained original double-storey brick residence with an entertainers pool.

This unique offering holds significant promise for astute investors and discerning homeowners, offering untapped future potential within the Rossmore Precinct, which is earmarked for future rezoning in alignment with the Western Sydney Airport development.

Comprising a well-preserved brick residence with a spacious living and dining areas, four bedrooms, three bathrooms, and a three car lock-up garage.

Key highlights of this property include:

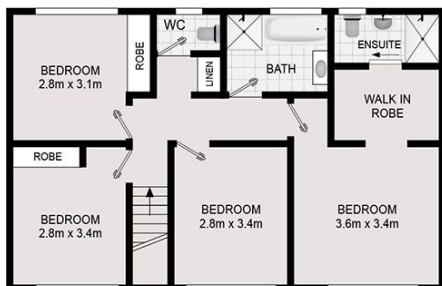
- Neatly presented and maintained two storey,

## Just Listed

**Type** : Acreage/Semi-Rural  
**Land** : 4.94 Acres

**Slavko Romic**  
0422683007

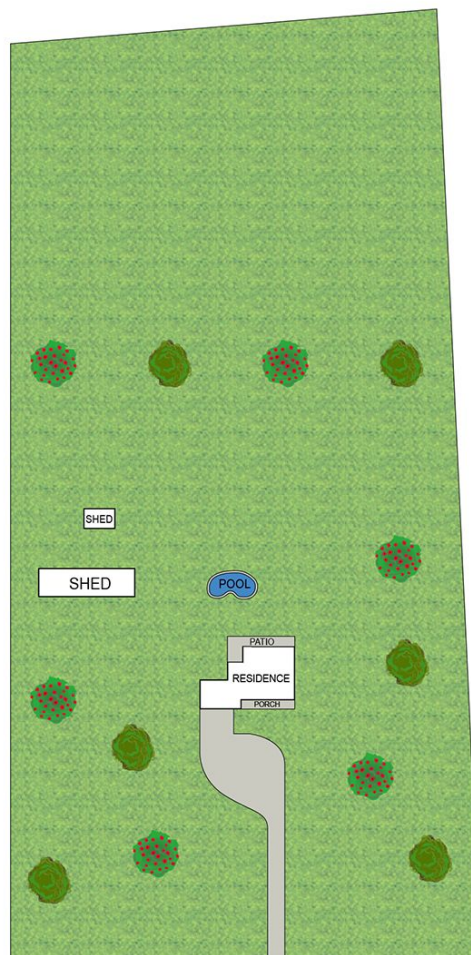
**Anthony Moore**  
0412730017



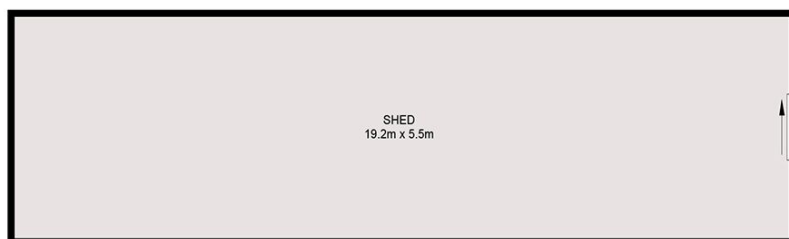
UPPER LEVEL



LOWER LEVEL



SITE PLAN



DISCLAIMER: Drawings are approximate and to be used for visual representation ONLY. All enquiries must be directed to the vendor, agent or party representing this floor plan.

