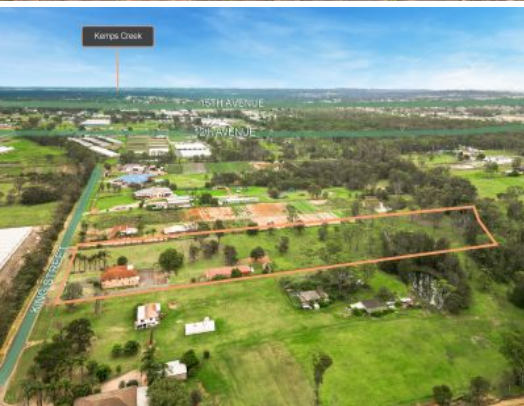




* Boundary lines are for illustrative purposes only *



293 King Street ROSSMORE, NSW

4 2 2

5 Acre Aerotropolis Opportunity

RomicMoore Property presents 293 King Street, Rossmore, a 5-acre property located within the greater Aerotropolis area. This expansive parcel of level land offers amazing uplift potential for future rezoning.

The property features a solid brick 4-bedroom, 2-bathroom home with an adjoining one bedroom granny flat. The property is currently zoned RU4 Primary Production and presents significant future development potential with substantial capital growth potential, making it an attractive investment opportunity.

Situated centrally between Fifteenth Avenue and Bringelly Road, the property offers convenient access to public transport, including train and bus services, as well as easy reach to arterial roads such as the M7 and M5 Motorway. Local shopping villages, restaurants, and a selection of primary and secondary schools are also within close proximity.

Key Property Details:

- Expansive 5-acre mostly level land
- Currently zoned RU4

Just Listed

Type : Acreage/Semi-Rural

Slavko Romic

0422683007

Anthony Moore

0412730017