

1/2-10 Nilson Avenue HILLSDALE, NSW



## HIDDEN JEWEL IN WHISPER QUIET LOCATION!

Designed for easy family living in a private, peaceful, and highly sought-after location, is this well-presented solid brick two storey townhouse.

Incorporating an open plan living/dining room which flows seamlessly onto a light and bright alfresco dining courtyard.

Boasting two generously proportioned bedrooms both with built-ins, the main with an ensuite.

This is a perfect opportunity to secure an immaculately presented home that would suit even the fussiest of family members.

? Modern poly-urethane kitchen with stone bench tops and designer appliances incl dishwasher

? Beautifully presented tiled main bathroom with shower and separate bath

? Reverse cycle, split system air conditioning to both levels

? Sunny and secluded coffee retreat entry garden

? Front of complex children's play area and visitor parking

? Within an easy drive to shops & parks

FOR SALE - \$875,000

**Type** : Townhouse

**Sold Date** : Monday, 14th February 2022

**Council Rates** : \$1,072.00/year (approx)

**Water Rates** : \$1,068.00/year (approx)

**Strata Rates** : \$3,840.00/year (approx)

**Robert Terley**

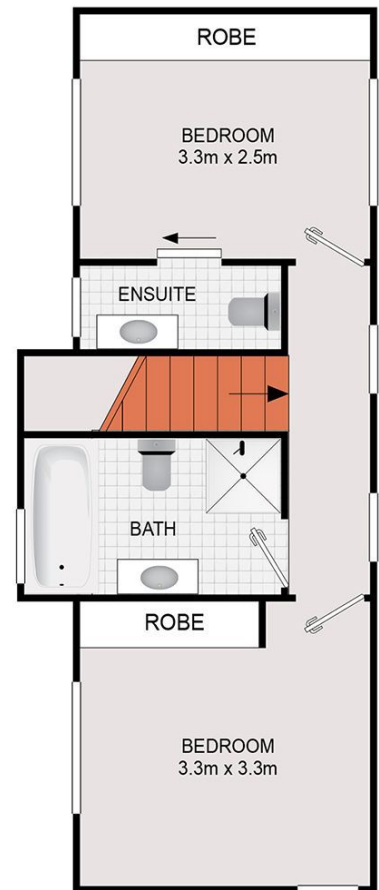
0419 218 375

**Slavko Romic**

0422683007



GROUND FLOOR



FIRST FLOOR

DISCLAIMER: Drawings are approximate and to be used for visual representation ONLY. All enquiries must be directed to the vendor, agent or party representing this floor plan.

