



205 Deepfields Road CATHERINE FIELD, NSW

 5  2  4

The Ultimate Landmark Residence

www.205deepfieldsroad.com

Undoubtedly one of the Western Sydney's grandest estates, this landmark residence is perched on an elevated 4,700m of established grounds.

The epitome of luxury and flawless quality, this impressive palatial home embraces a stunning lifestyle in absolute privacy.

Entry level comprises of elegant interiors and soaring ceilings. A range of formal and casual living areas open to a Tuscan inspired courtyard leading to a self contained cabana.

Upstairs comprises of 4 generous bedrooms, the master suite occupies the entire upper north wing with a lounge, en-suite and extra large main bedroom.

Close proximity to local shops, schools and shopping centers.

Features:

- Elegant contemporary interiors flow over to spacious levels
- Exquisite finishes have been sourced from around the globe

*Inspections by strict pre arranged appointme

\$3,650,000

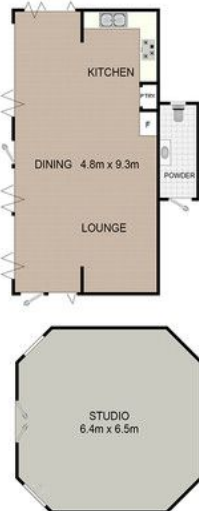
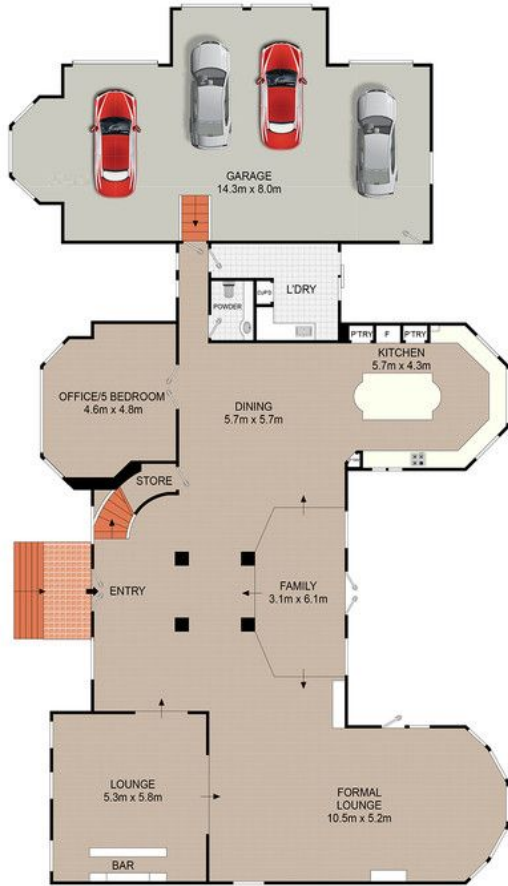
Inspect : Saturday, 19th January 2019 11:45 - 12:15
Type : House
Land : 4700 m2

Slavko Romic

0422 683 007

Anthony Moore

0412 730 017



All stated dimensions are approximate only. Particulars given are for general information and do not constitute any representation on the part of the vendor or agent.
COPYRIGHT © PROPERTY MARKETING AUSTRALIA PTY. LTD.

205 DEEPFIELDS ROAD

CATHERINE FIELDS