



29/12-18 Bathurst Street LIVERPOOL, NSW



**UNDER CONTRACT Contemporary Open Plan Apartment - Central Location**

**\$510,000 - \$535,000**

With only 200 meters to Liverpool Westfield, this ideally located apartment features an elegant, ultra spacious and free flowing layout.

**Type** : Apartment  
**Sold Date** : Thursday, 23rd August 2018

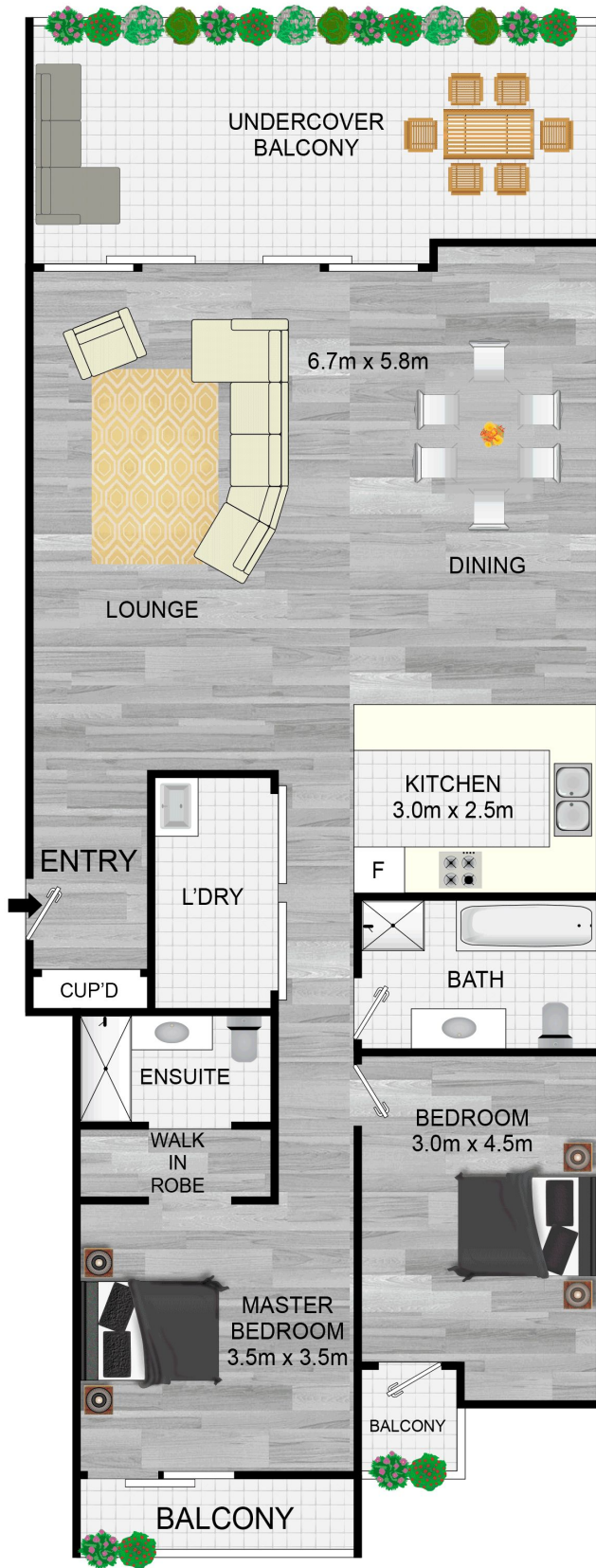
It boasts 2 large bedrooms, both with built in robes and balconies, a spacious open-plan living area, a dining area that opens to a generous entertainers terrace and 2 full bathrooms including an ensuite.

Situated in a private, secure setting with beautiful common grounds, this home is only a short distance to parks, cafes, transport and schools.

- 2 double bedrooms with built-ins
- 2 full modern bathrooms, internal laundry
- Modern kitchen
- Level lift access, security video intercom
- Large entertainers terrace

**Slavko Romic**

0422683007



All stated dimensions are approximate only. Particulars given are for general information only and do not constitute any representation on the part of the vendor or agent.

