



491/83-93 Dalmeny Avenue ROSEBERY, NSW

2 2 1

## Oversized Level Access Garden Apartment

A rare offering, this large, beautifully renovated apartment enjoys a privileged setting with a substantial on-title terrace and direct access to the central park-like gardens. It benefits from a serene setting within the sought after 'Kimberley Estate' community, surrounded by fabulous eateries, transport and lifestyle amenities.

Some outstanding features:

- + Level access to an exceptional 156 sqm on title
- + Stylish expansive, open planned interiors boast contemporary bamboo flooring
- + Stone wrapped custom kitchen with high-end European appliances and a gas cooktop
- + A laundry with butler's pantry provides excellent additional storage space
- + Paved entertainer's terrace with a door that allows access to the garden spaces
- + Two double bedrooms including a master with his and hers robes
- + Two marble bathrooms with heated floors and decadent freestanding bath
- + 25sqm lock up garage with storage/workshop space

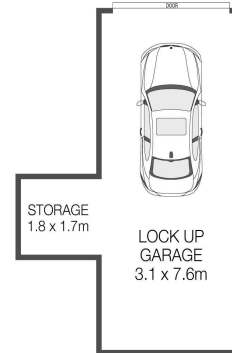
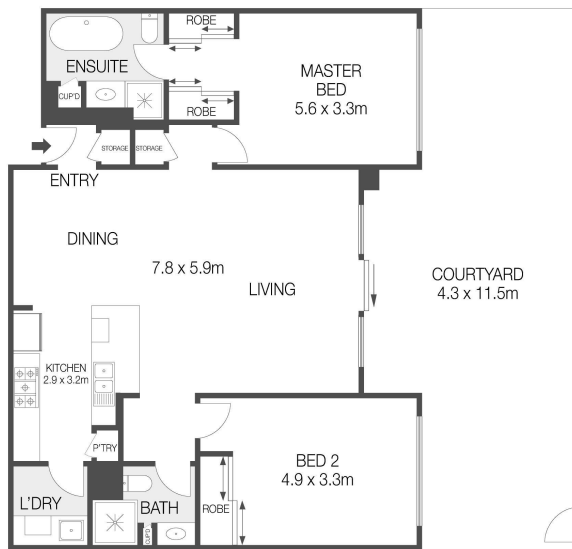
By Negotiation

**Type** : Apartment  
**Sold Date** : Tuesday, 21st August 2018

**Aleksandar Elic**  
0404061232

**Robert Terley**  
0419 218 375

491/83-93 Dalmeny Avenue  
**ROSEBERY**



**LEVEL ONE**



Plans shown are for presentation purposes only and are not part of any legal document or title. They are subject to errors, omissions and inaccuracies. They should not be used as a sole and accurate reference. Interested parties should make their own inquiries using independent sources.

**ROMICMOORE**  
PROPERTY