



66 Riley Road LEPPINGTON, NSW



Substantial Home - 5.7 Acres Of Prime Land

5.7 Acres Of Prime Land With A Substantial Home

This level 5.7 acre (approx.) block is positioned in one of Sydney's fastest growing regions.

Comprising of a deceptively spacious six bedroom residence with 2.5 bathrooms and ample lock up car parking and storage facilities set on private and tranquil surrounds.

This is an investment opportunity with fantastic potential for future capital growth.

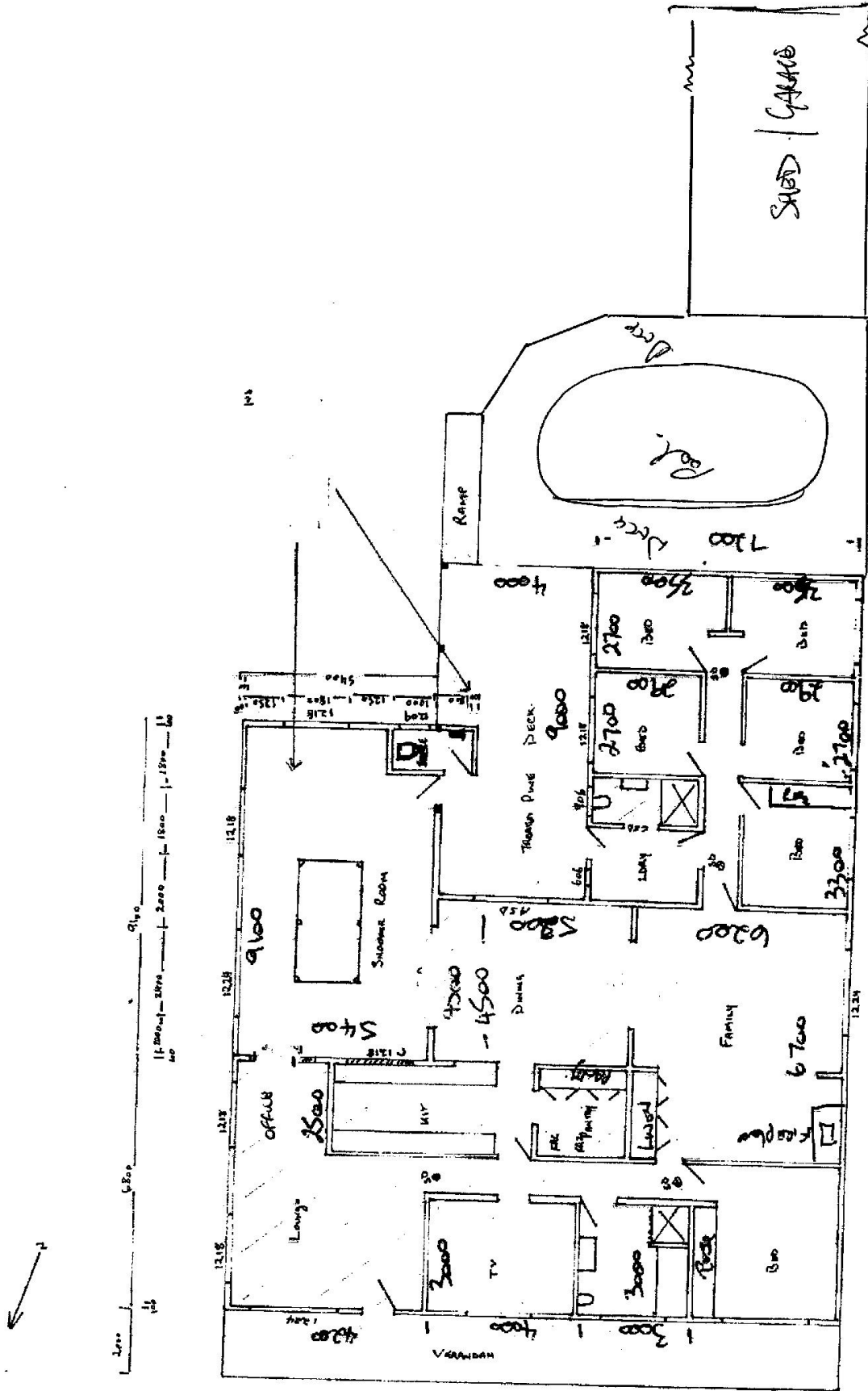
- Flexible settlement terms
- large 5.7 acres (approx.) of land
- Spacious 6 bedroom home
- multiple living areas
- 2 substantial sheds , 12m x 12m and 25m by 6.2m

\$2,350,000

Type : Acreage/Semi-Rural
Sold Date : Friday, 18th September 2020

Slavko Romic
0422683007

Anthony Moore
0412730017



All stated dimensions are approximate only. Particulars given are for general information only and do not constitute any representation on the part of the vendor or agent.